

NOTES: UNLESS OTHERWISE SPECIFIED

1. MATERIAL SPECIFICATIONS:

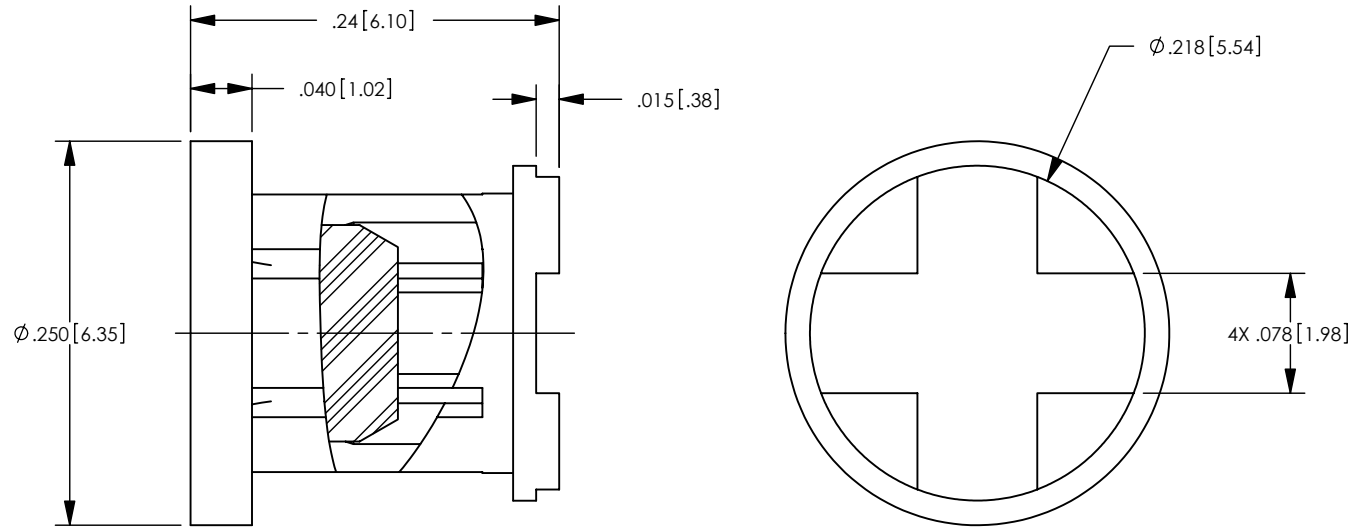
BODY: BRASS PER ASTM B16
CAP: TEFLON PER ASTM D1710

2. FINISH SPECIFICATIONS:

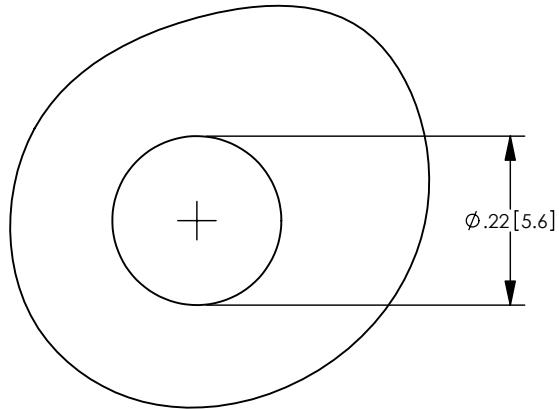
BODY: .000030 MIN GOLD PER ASTM B488 OVER
.000080 MIN. NICKEL PER AMS-QQN-290 (RoHS)

3. PARTS ARE SUPPLIED USING TAPE & REEL PACKAGING. (13" REELS)

REV	DESCRIPTION	BY DATE	APPD
C	REVISED & REDRAWN PER ER7306	04/14/08 CMB	CMB



CATALOG P/N: 01333



RECCOMENDED PC BOARD LAYOUT
SCALE 4:1

PER ASME Y14.5M-1994 UNLESS OTHERWISE SPECIFIED: DIMENSIONS ARE IN INCHES [MM] TOLERANCES: DECIMAL: .XX [X.X] ± .01 [0.3] .XXX [X.XX] ± .005 [0.13] .XXXX [X.XXX] ± .XXXX ANGLES: ± 2° SCALE: 4:1				 Winchester Electronics Corporation 62 Barnes Industrial Road North Wallingford, Connecticut 06492	
CUSTOMER DRAWING			 POWER SNAP SURFACE MOUNT 40 AMP		
DRAWN	DATE	APPROVED	DATE	A	SD01333
KJT	01/31/02	JWH	02/01/02		
APPROVED	DATE	APPROVED	DATE	SHT 1 OF 1	REV C
JEM	02/01/02	JED	02/01/02		